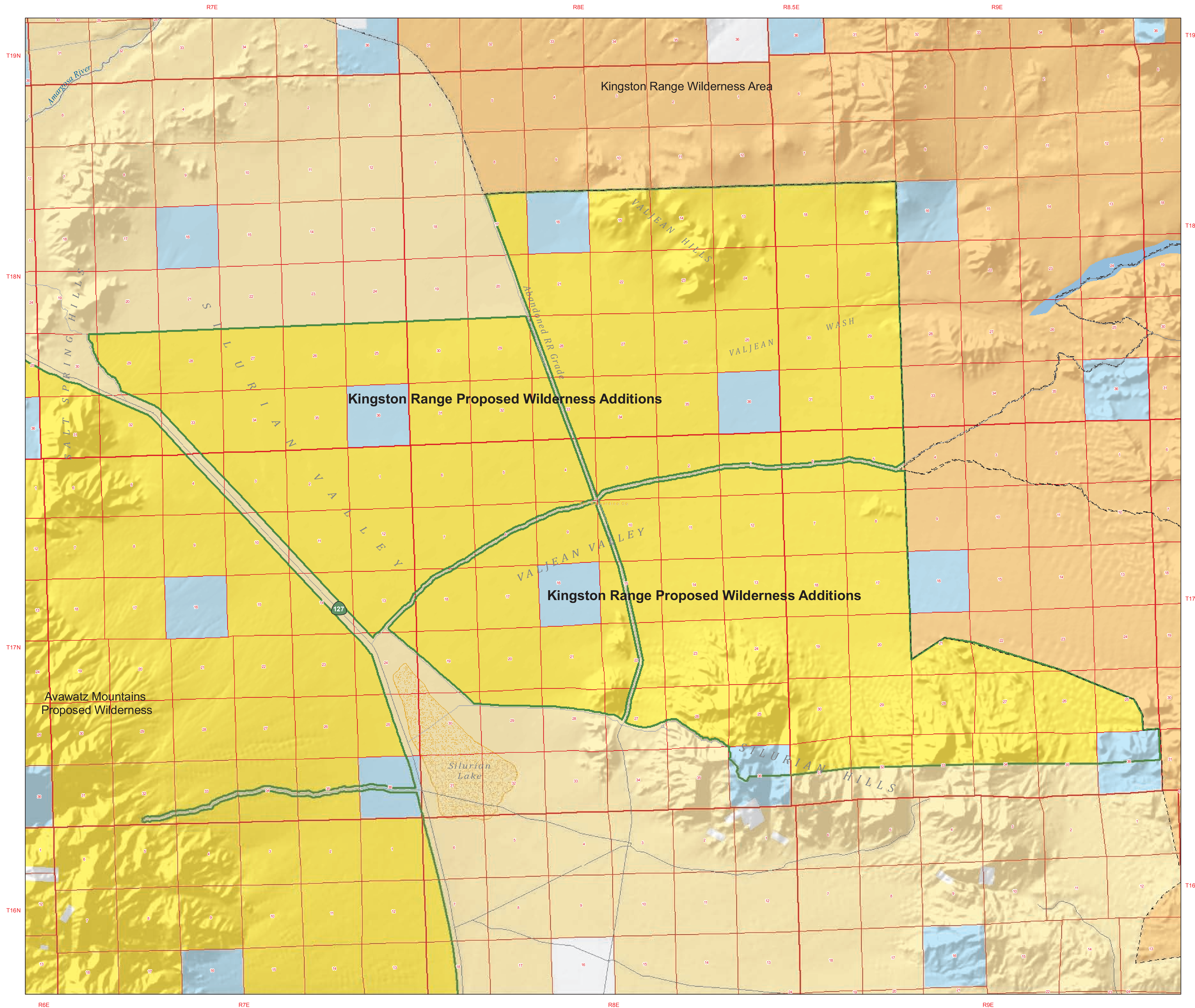
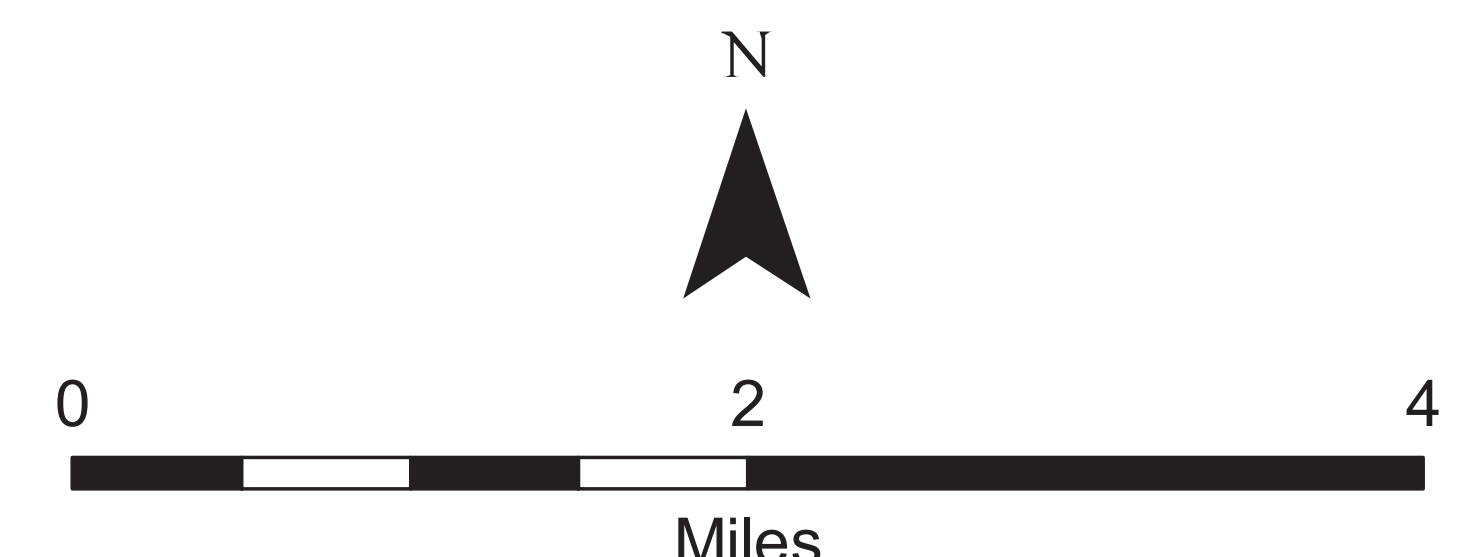


Kingston Range Proposed Wilderness Additions July 15, 2009

This map prepared at the request of Senator Dianne Feinstein



- Proposed Wilderness
- Existing Wilderness Boundary
- Federal Wilderness**
- BLM
- NPS
- USFWS
- Land Status**
- Bureau of Land Management
- Forest Service
- National Park Service
- US Fish and Wildlife Service
- Military
- State Lands
- Private/Other



1:36,000 at a page size of 34 in. by 44 in.

No warranty is made by the Bureau of Land Management (BLM).
The accuracy, reliability, or completeness of these data for individual
use or aggregate use with other data is not guaranteed.

US Department of the Interior
BUREAU OF LAND MANAGEMENT
 California State Office
 Sacramento, California
 (916) 978-4400
www.blm.gov
 Date Prepared: 7/16/2009
 Project: KingstonRange_15JULY09_wsa